

# ***SciAnalytical Strategies, Inc.***

*Pharma, Biotech and Clinical Analytical Testing and Consulting Services*

***505 Coast Boulevard South***

***Suite 115***

***La Jolla, CA 92037***

***dkassel@scianalytical.com***

## ***Study Title***

**LC/UV/ELSD/MS Analysis of Reaction Products**

**Sponsor: XXX**

**Study Director:**

**CONFIDENTIAL**

# LC/MS System Information

**Mass Spectrometer:** Waters ZQ single quadrupole

**Ionization Method:** Positive Ion Electrospray Ionization

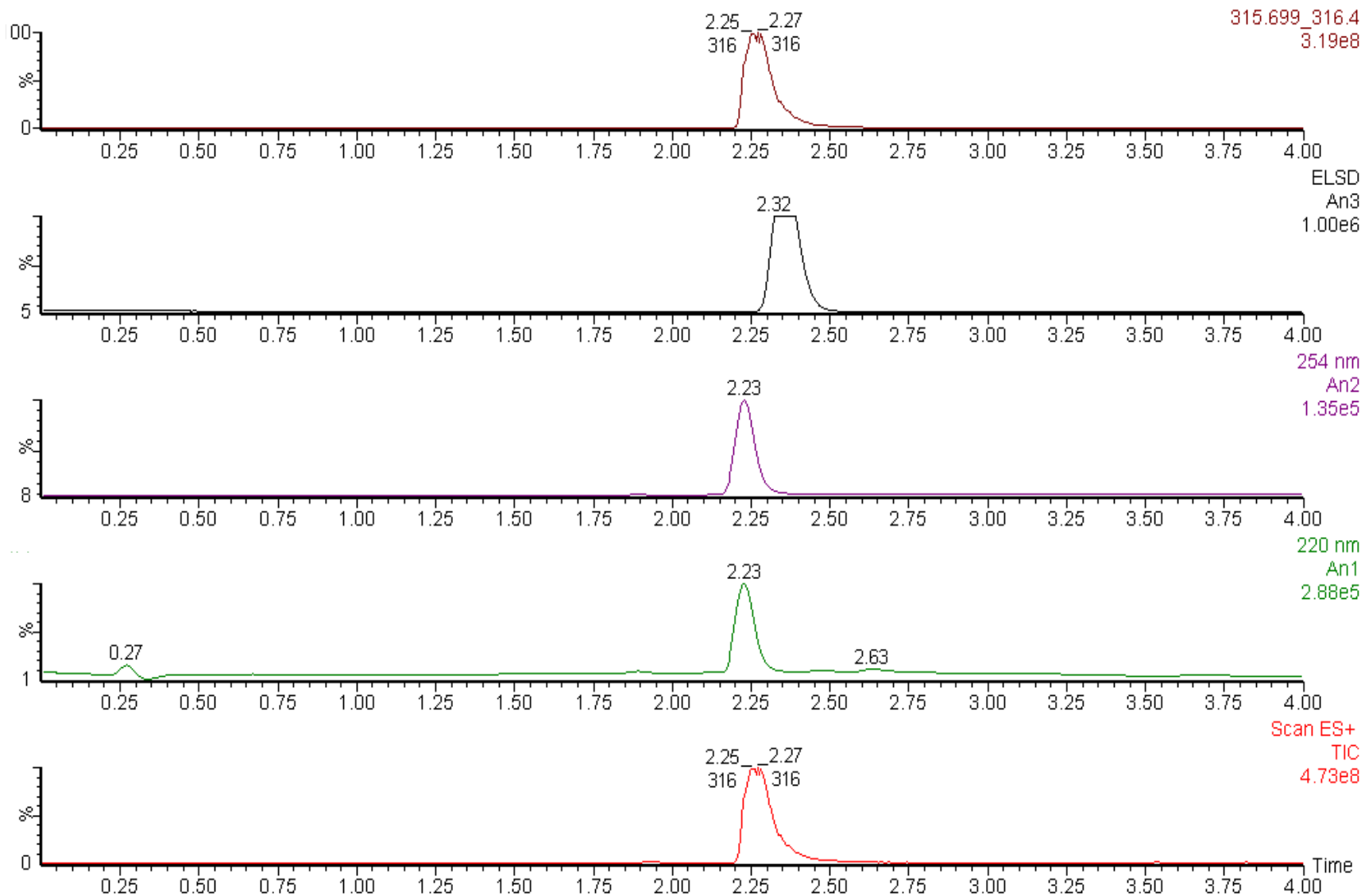
**HPLC:** Shimadzu LC10AD binary system

**HPLC Column:** Luna C18 2.5 um column 2.1 mm x 30 mm

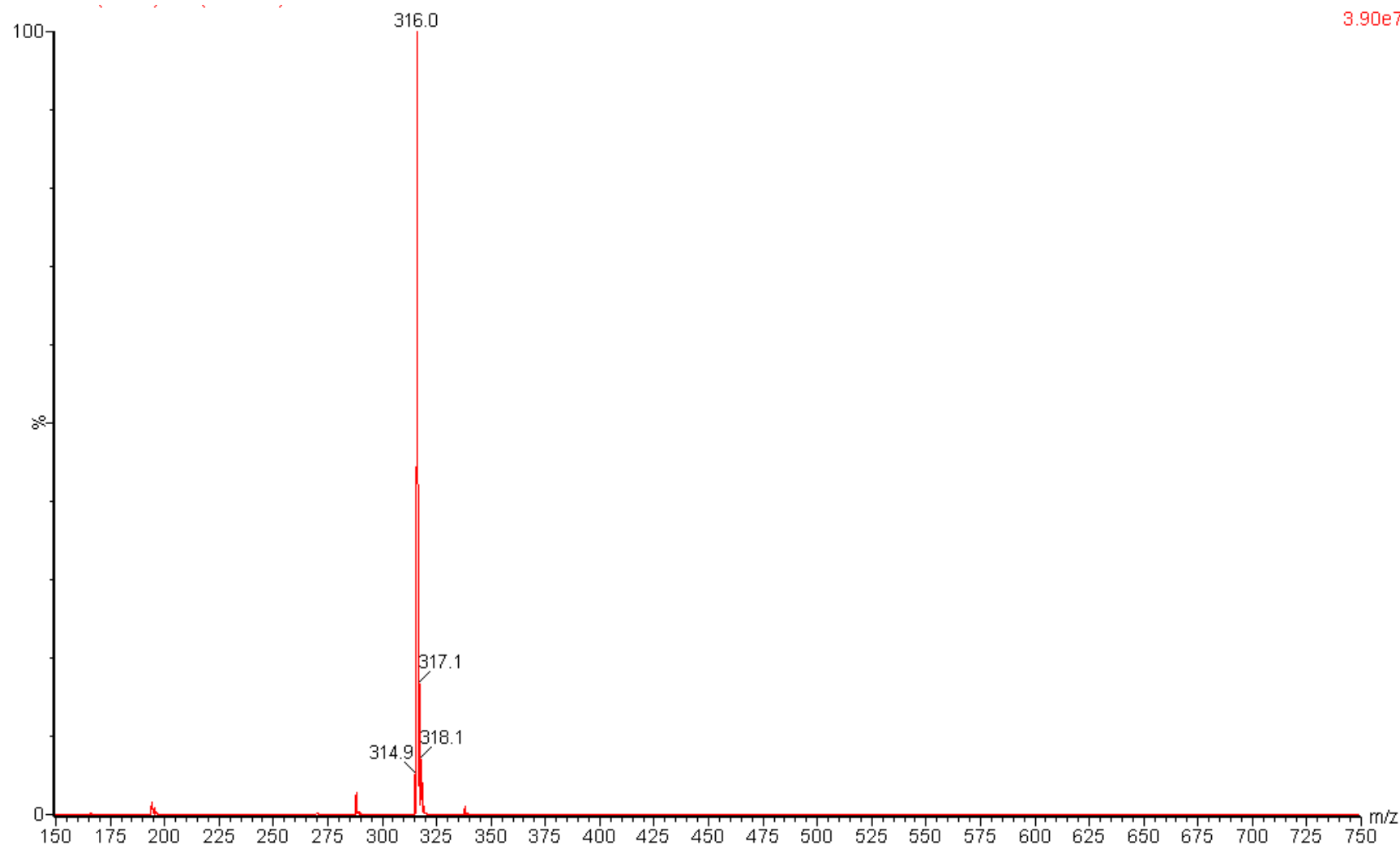
**Gradient:** 10% B hold for 1 min  
10% B → 90% B in 3 min

**ELSD:** Alltech ELSD 2000

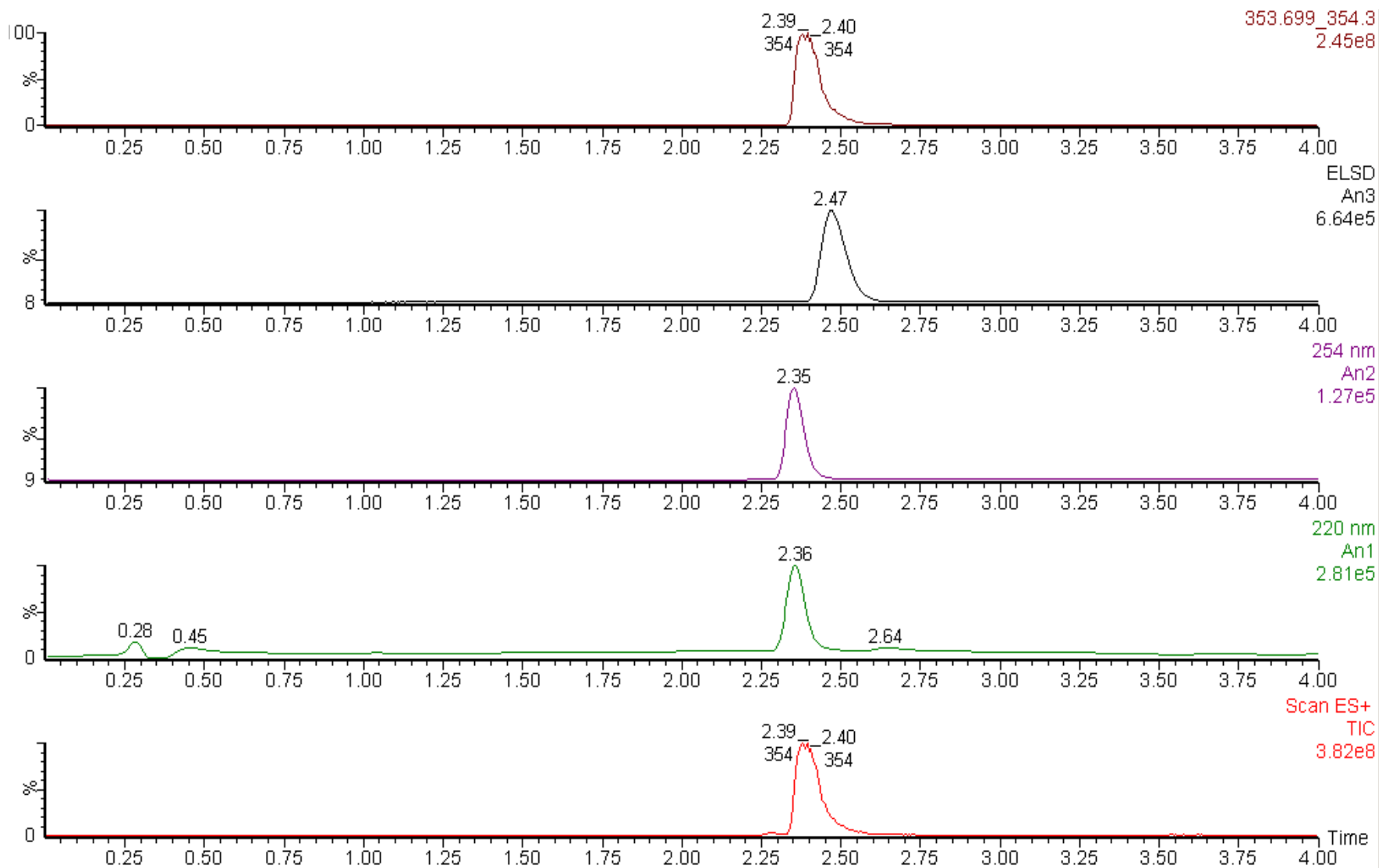
# LC/UV/ELSD/MS Chromatograms for Cmpd A



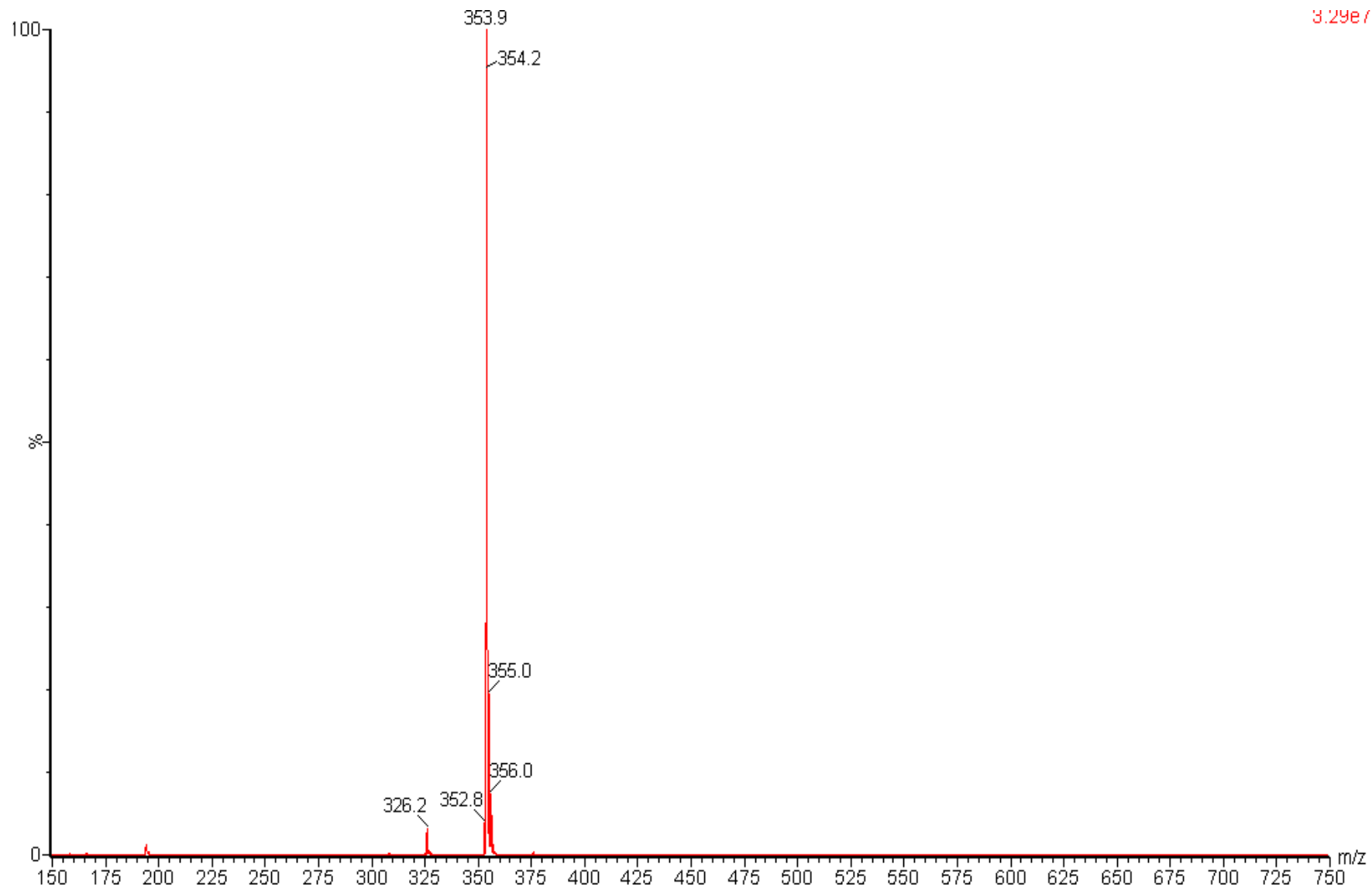
# Positive Ion ESI-MS Spectrum for Cmpd A



# LC/UV/ELSD/MS Chromatograms for Cmpd B



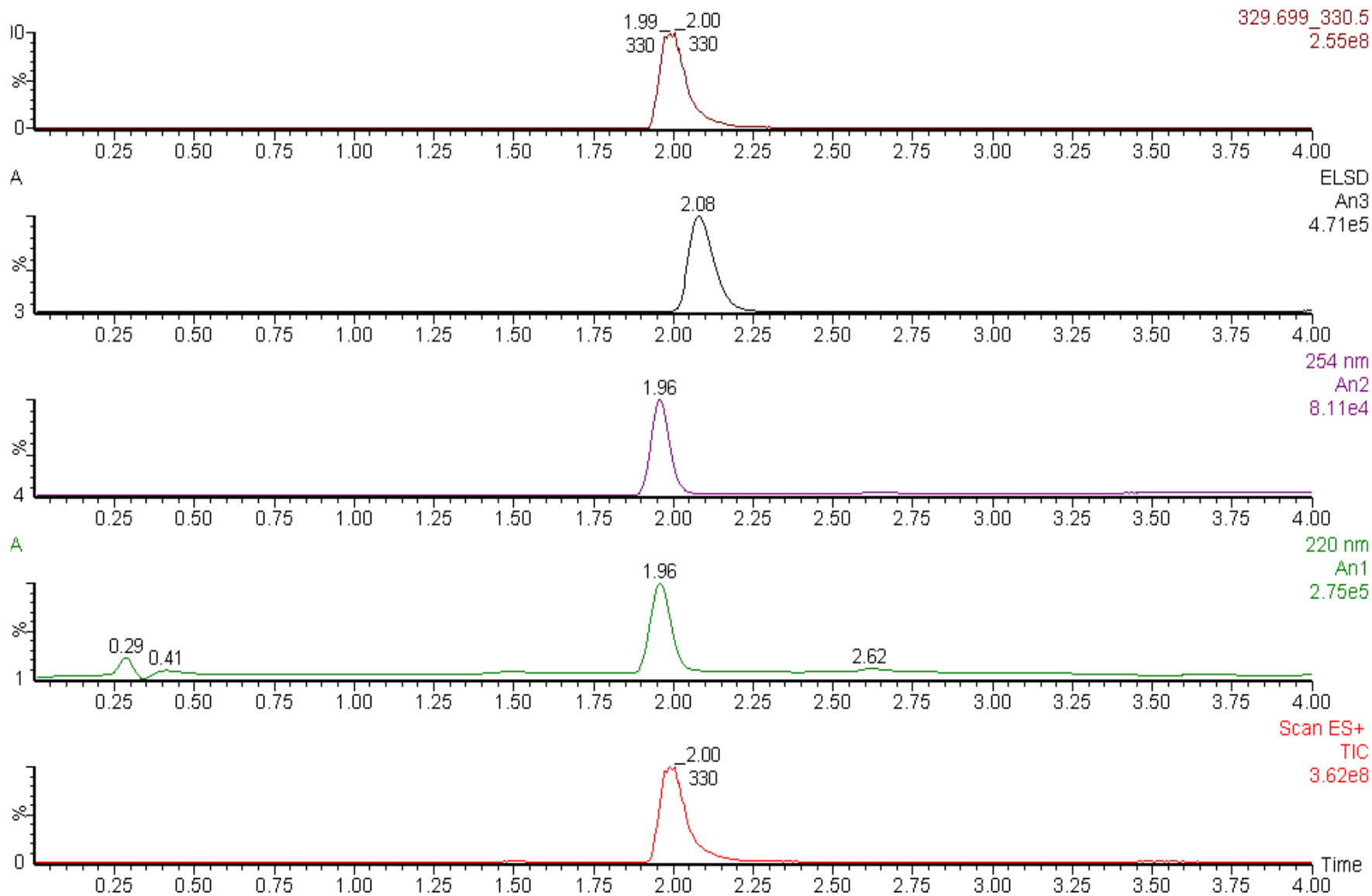
# Positive Ion ESI-MS Spectrum for Cmpd B



SciAnalytical Strategies, Inc.

Pharma, Biotech and Clinical Analytical Testing and Consulting Services

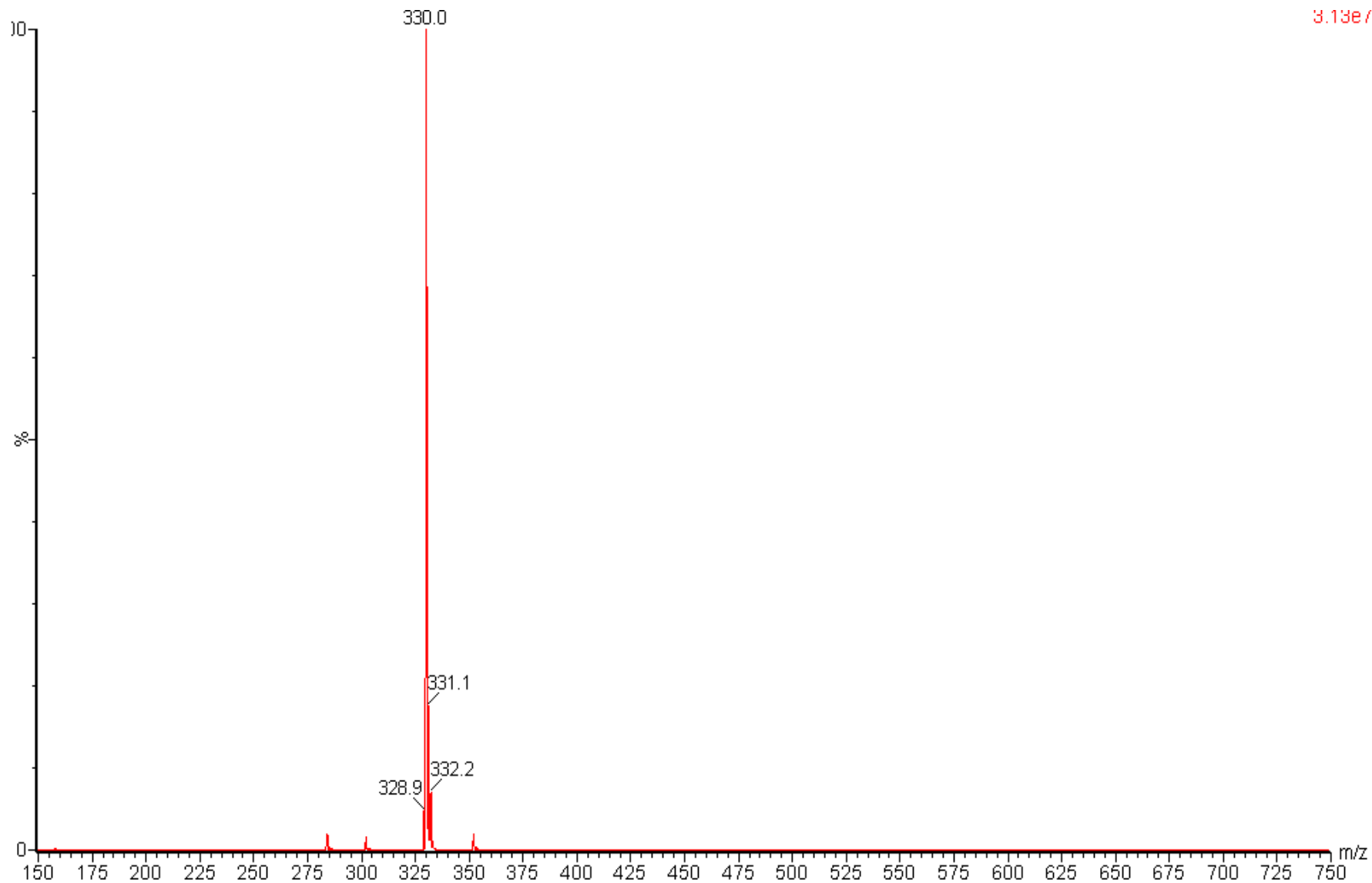
# LC/UV/ELSD/MS Chromatograms for Cmpd C



SciAnalytical Strategies, Inc.

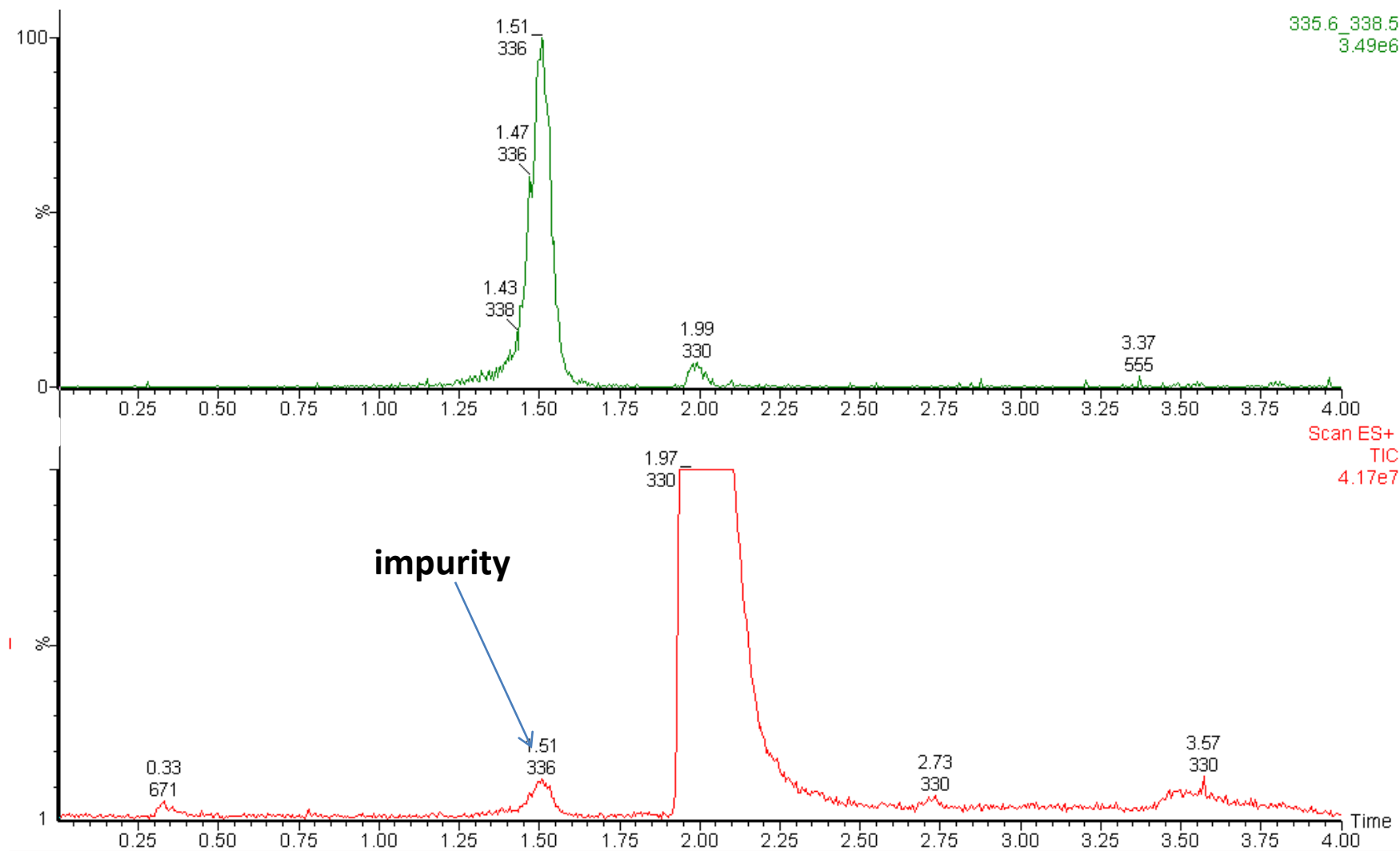
Pharma, Biotech and Clinical Analytical Testing and Consulting Services

# Positive Ion ESI-MS Spectrum for Cmpd C

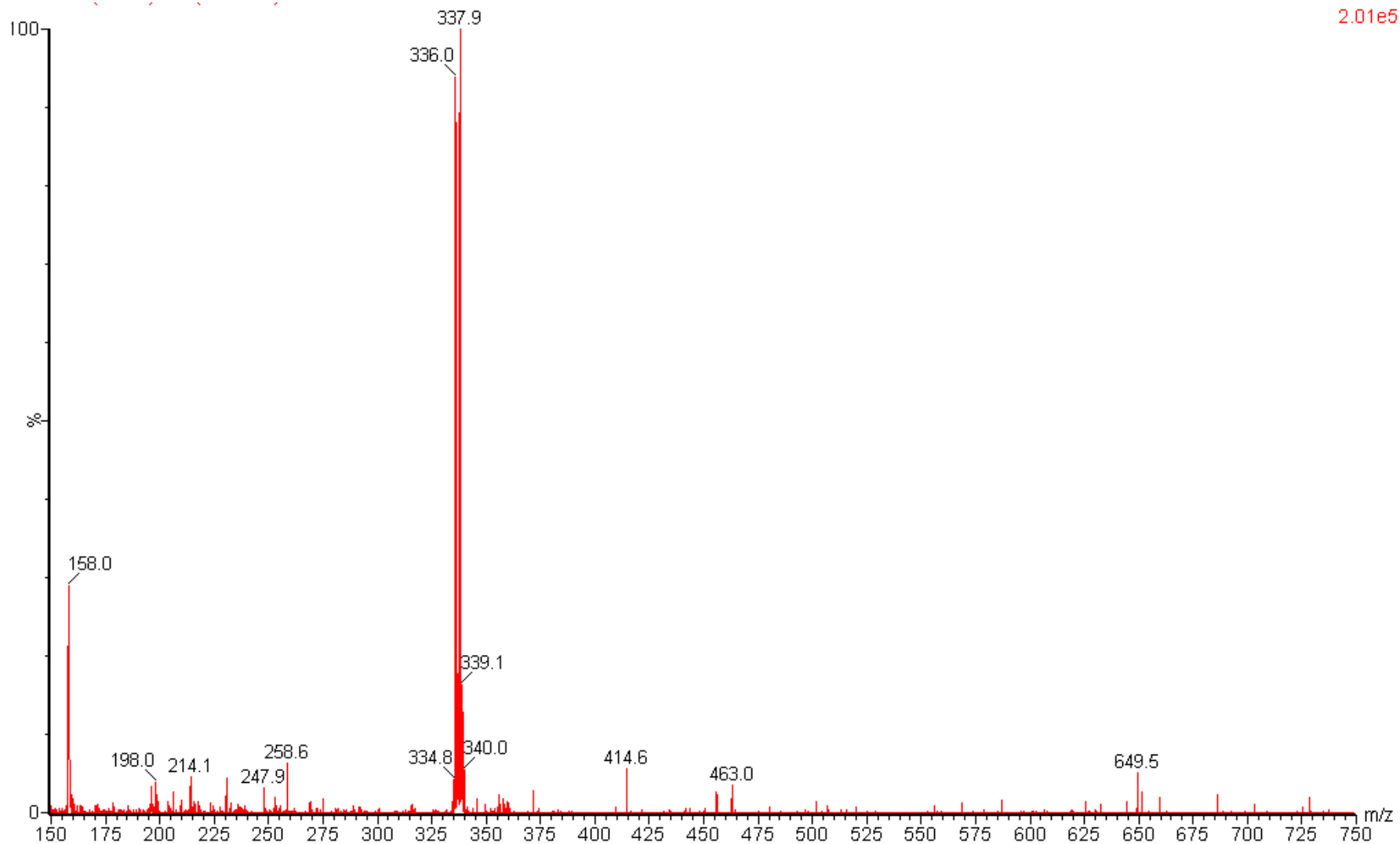




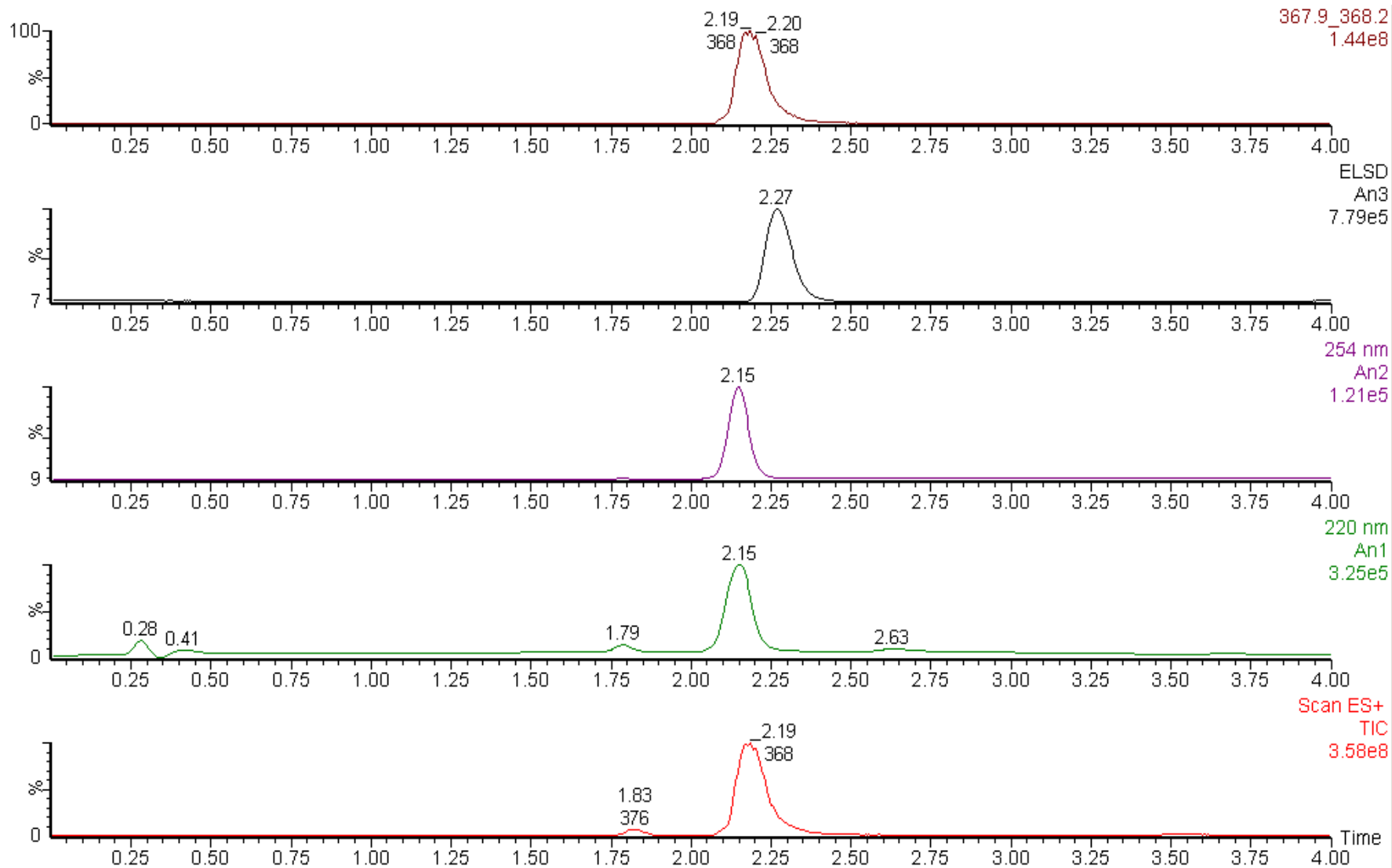
# LC/UV/ELSD/MS Chromatograms for Cmpd D



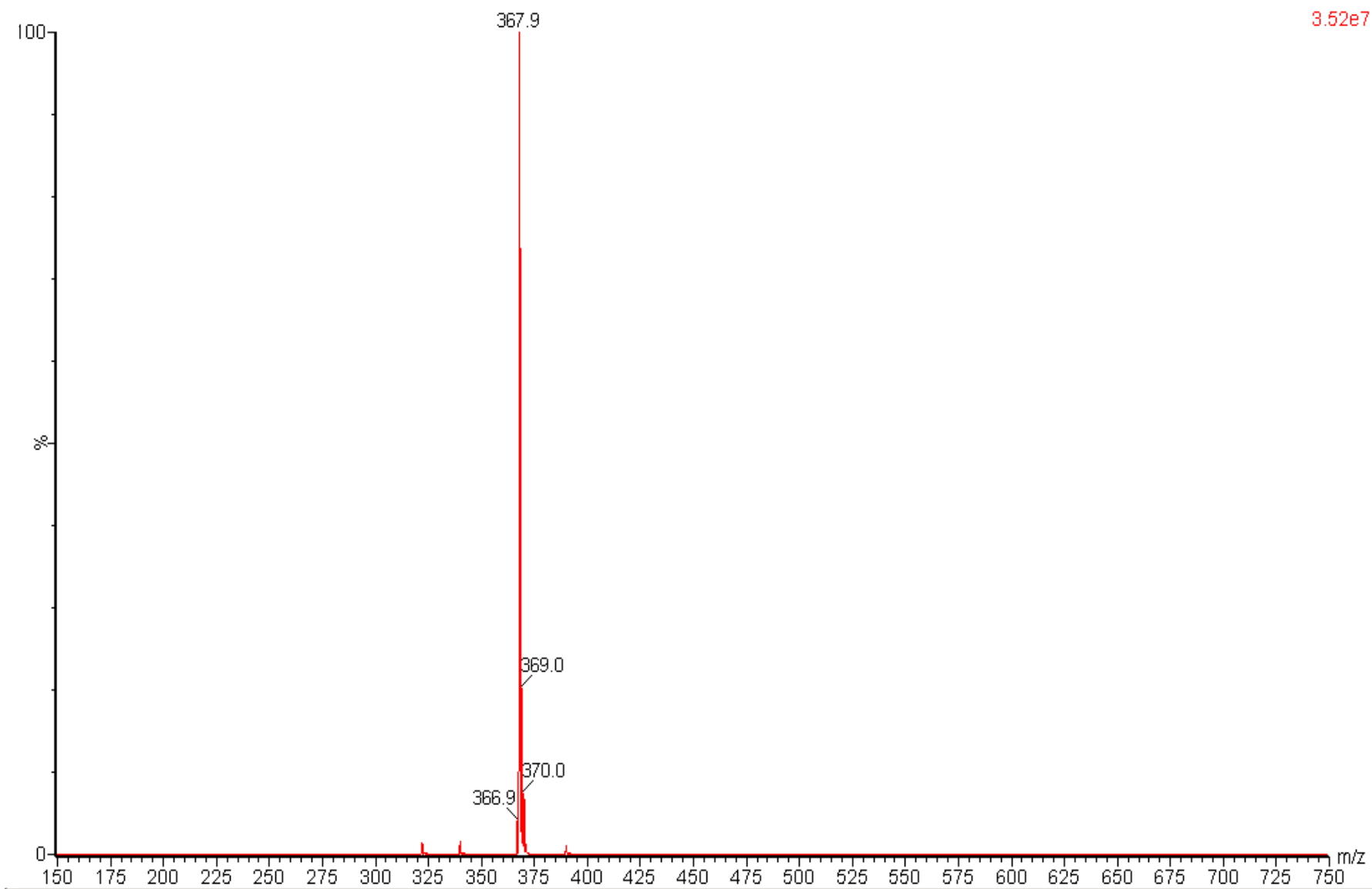
# Positive Ion ESI-MS Spectrum for Cmpd D impurity



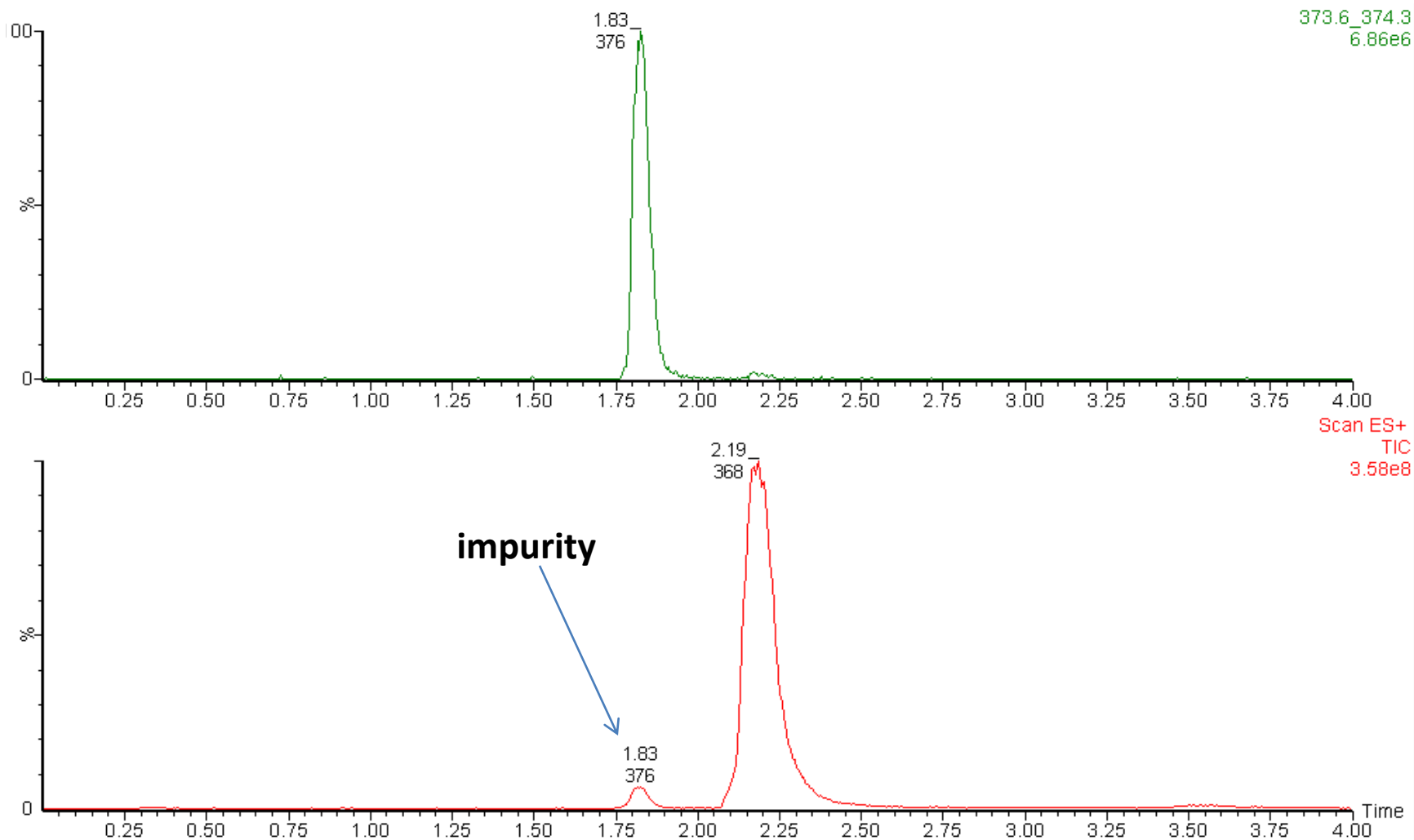
# LC/UV/ELSD/MS Chromatograms for Cmpd E



# Positive Ion ESI-MS Spectrum for Cmpd E



# LC/UV/ELSD/MS Chromatograms for Cmpd E



# Positive Ion ESI-MS Spectrum for Cmpd E Impurity

